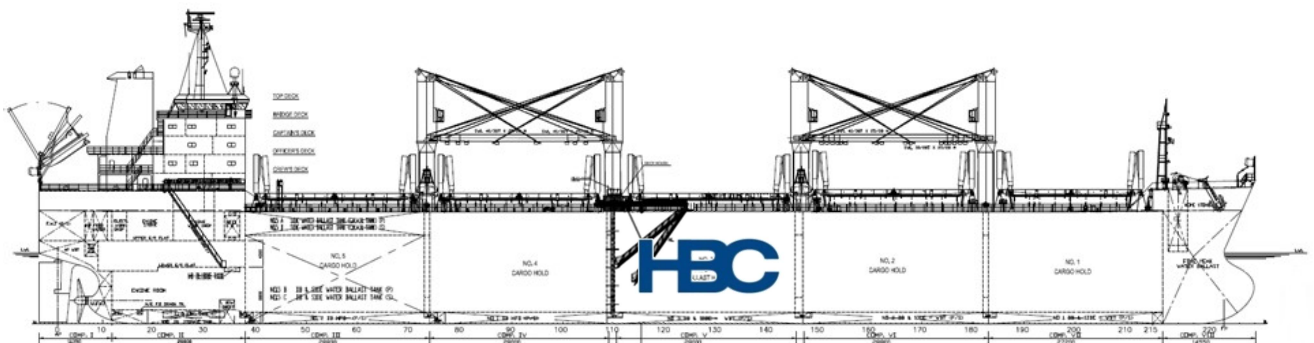




MV Erlyne

Type	Geared Bulker / Box-Open Hatch
Class	Nippon Kaiji Kyokai
Built	2010
Flag	Liberia
Summer Dwt	50.194 mts
Draft	12,86 m
LOA	189,90 m
Beam	30,50 m
Holds / Hatches	5 / 5
Grain / Bale	60.162 cbm / 58.410 cbm
Gear	4 X 35 mts SWL
Grabs	Yes

All details are about and without guarantee. Description not to be used for Charter Parties.



HBC Hamburg Bulk Carriers GmbH Co. KG
 Neumühlen 15
 22763 Hamburg
 Germany

Phone: +49 40 800 98 2 – 0
 E-Mail: chartering@hbc.company

HBC Asia Pte. Ltd.
 8 Eu Tong Sen Street
 #12-91/92 The Central
 059818 Singapore

Phone: +65 6303 91 – 11
 E-Mail: chartering@hbc.company